



LSM12N-7

# LITHIUM STACKER

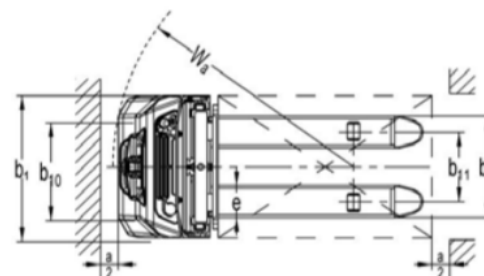
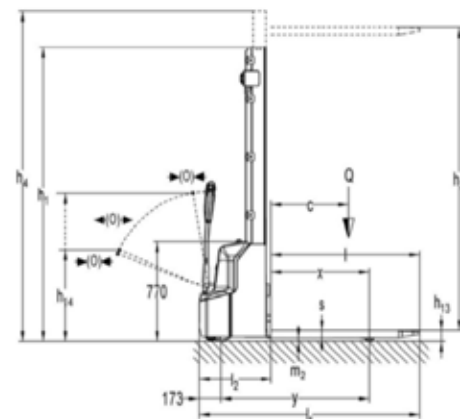
1.2 ton capacity

***Li-Ion***  
TECHNOLOGY



# General Specifications - Stackers (LSM12N-7)

CHARACTERISTICS	1.1	Manufacturer			Doosan
	1.2	Model			LSM12N-7
	1.3	Drive			electric
	1.4	Operator Type			walkie
	1.5	Load Capacity/rated load center	Q	kg	1,200
	1.6	Load Center	c	mm	600
	1.8	Load Distance	x	mm	760
	1.9	Wheelbase	y	mm	1,147
	WEIGHT	2.1	Service Weight (incl. battery)		kg
2.2		Axle loading, loaded, front/rear		kg	560/1,225
2.3		Axle loading, unloaded, front/rear		kg	440/145
TYRES	3.1	Tyres			Polyurethane (PU)
	3.2	Tire size, front		mm	Ø210x70
	3.3	Tire size, rear		mm	Ø80x93
	3.4	Additional wheels (dimensions)		mm	Ø100x50
	3.5	Wheels, number front/rear (x=driven wheels)			1x + 1 / 2
	3.6	Tread, Front	b10	mm	550
	3.7	Tread, Rear	b11	mm	400/515
DIMENSIONS	4.2	Lowered Mast Height	h1	mm	2,280
	4.4	Lift Height	h3	mm	see table
	4.5	Extended Mast Height	h4	mm	4,037
	4.9	Height of tiller in drive position, min./max.	h14	mm	710/1,150
	4.15	Height, lowered	h13	mm	86
	4.19	Overall Length	l1	mm	1,710
	4.20	Length to Forkface	l2	mm	560
	4.21	Overall Width	b1	mm	800
	4.22	Fork Dimensions	s/e/l	mm	60/180/1,150
	4.25	Distance over forks	b5	mm	570/685
	4.32	Ground Clearance, center of wheelbase	m2	mm	26
	4.33	Aisle width for pallets 1.000 x 1,200 lengthways	Ast	mm	2,197
	4.34	Aisle width for pallets 800 x 1,200 lengthways	Ast	mm	2,145
	4.35	External Turning Radius	Wa	mm	1,350
PERFORMANCE DATA	5.1	Travel Speed, loaded/unloaded		km/h	4.5/4.7
	5.2	Lift Speed, loaded/unloaded		m/s	0.12/0.19
	5.3	Lowering Speed, loaded/unloaded		m/s	0.13/0.11
	5.8	Max. Gradeability, loaded/unloaded		%	5/10
	5.10	Service Brake			electromagnetic
ELECTRIC MOTOR	6.1	DC - Drive motor		kW	0.65
	6.2	DC - Lift motor		kW	2.2
	6.3	Battery acc. to DIN 43535 A/B/C/no			no
	6.4	Battery voltage, nominal capacity K5		V/Ah	24/60
	6.5	Battery weight		kg	19
	6.6	Energy consumption acc. to VDI cycle		kWh/h	0.8
ADDITION DATA	8.1	Type of control for drive and lift			DC Speed Control
	8.4	Sound level at driver's ear acc. to EN12053		db(A)	<70



Technical specifications are subject to change without notice.

MAST SPECIFICATIONS						
	Closed height mm - h1	Free lift height mm - h2	Lift height mm - h3	Extended mast height mm - h4	Lift + fork height mm - h3 + h13	Residual capacity kg
Simplex	1,930	1,514	1,514	1,930	1,600	1,200
	2,330	1,914	1,914	2,330	2,000	1,200
STD	1,930		2,814	3,337	2,900	1,000
	2,080		3,114	3,637	3,200	800
	2,280		3,514	4,037	3,600	700