



B13R-7 / B15R-7 / B16R-7

7-SERIES FORKLIFTS

Electric 1.25 to 1.6 ton capacity 3-wheel rear drive



Leading the way

The new world class 7-Series electric counterbalance forklifts continue to follow the core Doosan tradition of delivering simple, powerful performance, whilst most of all, delivering the best possible value for our customers.

The specially designed ergonomic operator compartment keeps the operator in complete control at all times, improving productivity and reducing stress and fatigue.

The new model offers improved visibility and the latest design in ergonomic hydraulic controls. Thanks to an improved durable design, Doosan’s new 7-Series electric trucks exceed the highest demands for safe operation.

The latest in AC control systems provide an unbeatable combination of power, performance and reliability. Each parameter is fully adjustable to perfectly match every your individual requirement, providing maximum control and accuracy for every function.

“ Higher lifting and travel speed helps me to complete my job efficiently ”

PRODUCTIVITY

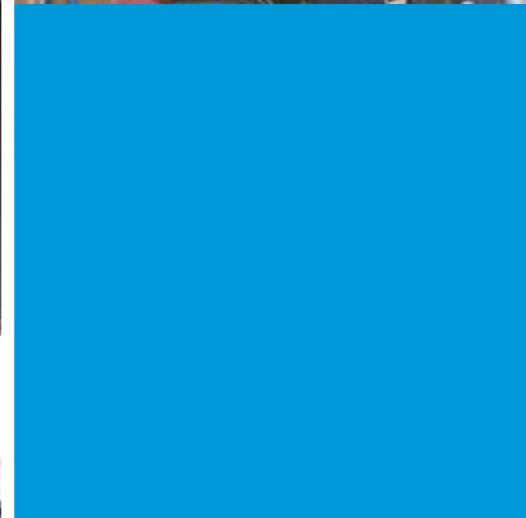
- Excellent visibility
- Smooth driving sensitivity
- Direction switch on main control valve



“ The robustness of the Doosan truck gets the toughest of jobs done ”

RELIABILITY

- Reliable AC control
- Durable rear drive axle
- Durable oil cooled disc brakes



“ The Doosan service support network has never let me down ”

SERVICEABILITY

- Doosan service network coverage
- Quick service response
- Easy to fix design



“ With the reassuring features of Doosan truck, operation is safe and comfortable ”

SAFETY AND ERGONOMICS

- Anti roll back
- Operator sensing system(OSS)
- Automatic speed control
- ISO3691 Hydraulic locking



Features overview

The Doosan 3-wheel electric counterbalance forklifts provide great power, excellent performance, enhanced safety, driving comfort, outstanding serviceability and reliability.

MAXIMUM PRODUCTIVITY

- Excellent visibility
- Smooth and responsive acceleration and plugging
- Direction switch on hydraulic control lever
- Battery changing system (SRIO)

SAFETY

- Anti roll back
- Automatic speed control
- ISO3691 Hydraulic locking
- Operator sensing system (OSS)
- Moving front axle
- Emergency switch
- LED lights
- Large panoramic mirror
- Turtle mode



OPTIMAL ERGONOMICS

- Easy and instinctive display
- Convenience tray
- Compact steering wheel
- Comfortable and adjustable seat
- Adjustable steering column

EXCELLENT RELIABILITY

- Reliable AC controller
- Rugged and durable rear drive axle
- ODB - Oil cooled disc brakes
- Robust frame & overhead guard

GREAT SERVICEABILITY

- Worldwide service network
- Doosan genuine parts
- Easy to access controller room and electric parts
- Examine forklift program with 'Easy view'
- Maintenance free rear drive axle

Maximum Productivity



Neatly arranged hydraulic hoses and chains provide clear front visibility through the wide view mast.



Hydraulic lever with directional switch **OPTION**

The direction switch is located on the lift lever, which makes it easier for the operator to quickly change between forward and backward driving direction.



Side Roll in & Out Battery **OPTION**

The battery changing system reduces the required time to change a battery to an absolute minimum, which shortens the down time of your truck significantly.



Productive acceleration & plugging

The productive acceleration and plugging gives the operator maximum safety and convenience. When starting the truck, the initial acceleration is reduced for safe & comfortable movement. The acceleration increases when driving at mid & high-speed for a more productive operation. Plugging can happen smooth and stable.



Excellent visibility

The precisely designed overhead guard profile with angled roof bars provides a clear upward view whilst ensuring ultimate strength for safety. The excellent visibility enables you to work faster and more efficient.

“ Boost your productivity with Doosan ”

Enhanced Safety



LED lights **OPTION**

Brighter and last longer than traditional sealed beams or halogen lights.



Emergency switch **OPTION**

The emergency switch can be reached easily when operating the truck.



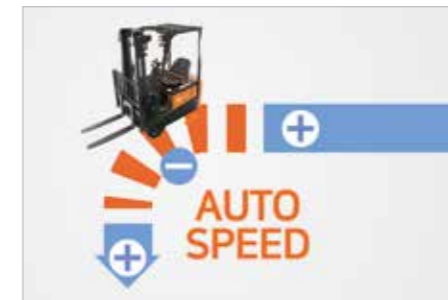
Large panoramic mirror **OPTION**

Provides a clear view of the rear working area for the operator, to ensure safe working conditions.



Anti roll back

The controller prevents the forklift from rolling back for 5 seconds when the truck is stopped on a slope.



Automatic Speed Control

The angle sensing information controls the travel speed when turning sharply. It automatically reduces the travel speed to the optimal speed when cornering, reducing the risk of accidents or damage.



Rear grab handle with horn **OPTION**

Enhances safety, comfort and convenience when traveling in reverse.



Mast Lowering Interlock & Tilt lock (ISO3691)

When the operator leaves the truck unattended, the hydraulic locking system prevents unintentional lowering and tilting of the mast. It safeguards the truck, the load and the work array.

“ Doosan takes safety to the next level ”

Safety & Optimal ergonomics



Safety



OSS (Operator Sensing System)

Whenever the operator leaves the seat, the truck travel and mast lifting functions will stop. This system avoids any unintended forklift movements when the operator is not seated.



Moving Front Axle

The wheel base becomes larger when the front axle is extended (by tilting backward). As a result, the forklift has even better stability. When the wheel base is shortened (by tilting forward), it is easy to maneuver the truck in compact spaces.



Turtle mode

By pushing the turtle mode button when the truck operates in a warehouse, the truck travel speed will slow down to a predefined travel speed setting, without impacting the lifting speed. This mode ensures safely manoeuvring in delicate operating situations.

Ergonomics



Premium adjustable seat (Grammer seat) **OPTION**

The full suspension comfort seat is fully adjustable to accommodate every individual preference. An additional heating system is also available for better operator convenience.



Convenience tray

The convenience tray was conceived by adopting combinations of new and old favorites to give the best operator experience. Some of the features include: a large cup holder, a USB port, 12V power outlet, and a clipboard holder.



Adjustable column

The operator can adjust the position of the column for convenience and comfort.



Small steering wheel

The steering wheel has a compact design that reduces operator fatigue.

“Infinite adjustability, optimized controllability and exceptional reliability makes the new Doosan 7-Series, the operator’s first choice.”

Excellent reliability

The 7-Series provide smooth and durable operation in various work applications.

With the reliable AC controller and the optimized design, Doosan's new machine is able to deliver efficient operation.



◀ The B16R-7 Series provide an excellent solution for less demanding applications.



Reliable AC controller

Curtis AC controllers provide an unbeatable combination of power, performance and functionality. The IP 65 rated controller is very reliable and well proven in tough applications.



AC drive & hydraulic motors

Maintenance free electric motors by eliminating motor brushes and commutators.



Oil cooled Disc Brakes (ODB)

Virtually maintenance-free, ODB is standard on the B16R-7. The enclosed brake system eliminates outside contamination significantly extending the brake life up to 5 times longer when compared to conventional shoe brakes.



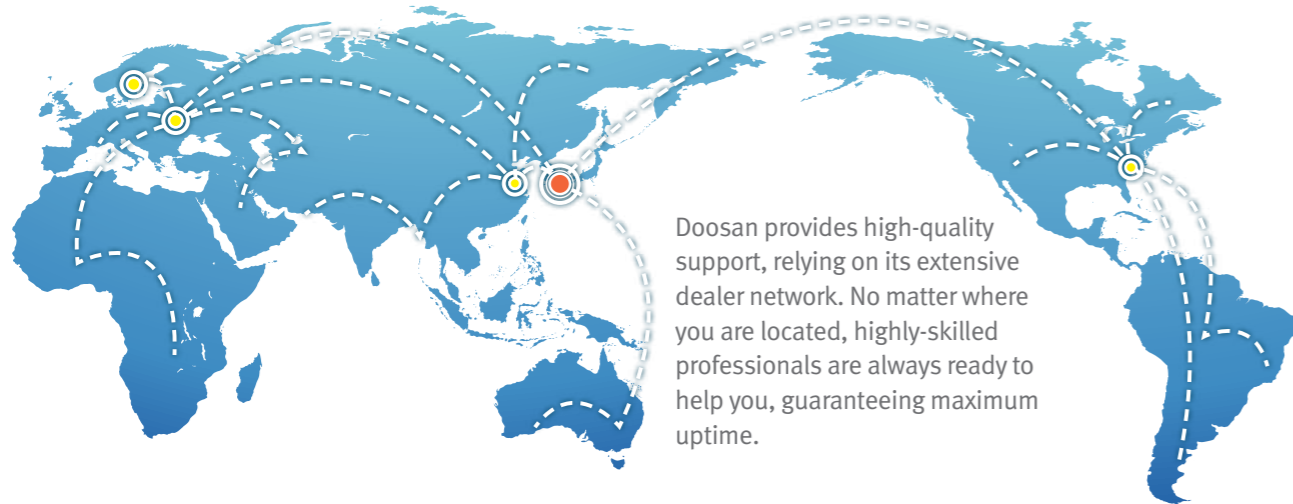
Rugged and Durable Rear Drive Axle

The rear drive axle is controlled by the integrated drive controller and effectively transfers the power and torque of the drive motor to the final drive for smooth and quiet operation. The rear drive axle is virtually maintenance free.

Great Serviceability

Worldwide service network

- Head quarter
- Overseas offices and service centers



Doosan provides high-quality support, relying on its extensive dealer network. No matter where you are located, highly-skilled professionals are always ready to help you, guaranteeing maximum uptime.



Doosan genuine parts

The parts warehouse supplies high quality Doosan parts to your local dealer.



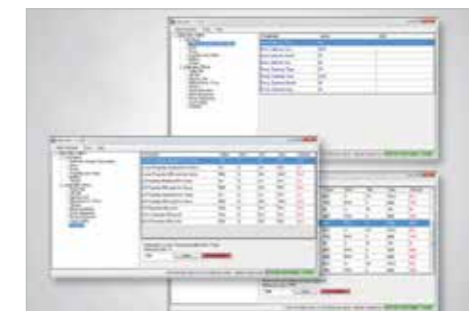
Wide open hood cover with locking type gas spring

Tool-less side panel



Brake oil indicator

Check the brake oil level and the display warning indicator on the instrument panel. The reservoir can be accessed easily.



Easy view

Simply by connecting the laptop to the forklift, a technician can adjust all the parameters to the operator's wishes. Service can happen easy and fast.



DOOSAN IS THE PARTNER YOU CAN COUNT ON



Main Specifications

MAJOR SPECIFICATIONS

		B13R-7	B15R-7	B16R-7
Load capacity/rated load	kg	1250	1500	1600
Load centre distance	mm	500	500	500
Load distance, centre of drive axle to fork	mm	330	330	330
Wheelbase (with forward/vertical/back mast)	mm	1121 x 1145 x 1195	1171 x 1195 x 1245	1171 x 1195 x 1245
Aisle width for pallets 1000 x 1200 crossways	mm	3074	3099	3124
Aisle width for pallets 800 x 1200 lengthways	mm	3196	3221	3246
Turning radius	mm	1415	1440	1465
Travel speed, loaded / unloaded	km/h	12.0 / 13.0	12.0 / 12.5	12.0 / 12.5
Lift speed, loaded / unloaded	m/sec	0.30/0.53	0.29/0.53	0.29/0.53
Lowering speed, loaded / unloaded	m/sec	0.50/0.45	0.50/0.45	0.50/0.45
Maximum drawbar pull, loaded/ unloaded, 5 minute rating	N	9623 / 9623	9623 / 9623	9623 / 9623
Maximum gradeability, loaded / unloaded, 5 minute rating	%	24/25	22/25	20/25
Battery voltage/nominal capacity K5	V/Ah	24/875	24/1000	24/1000

Standard Features and Optional Extras

SAFETY & STABILITY

Anti roll back	Standard features
Automatic speed control	Standard features
ISO 3691 Mast lowering inter-lock & tilt lock	Standard features
Low battery warning alarm	Standard features
Operating Sensing System (OSS)	Standard features
Emergency stop switch	Optional extras
LED Lights	Optional extras
Rear grab handle with horn switch	Optional extras

OPERATOR COMFORT (ERGONOMICS)

Adjustable tilt steering column & easy grip (Ø280 size) steering wheel	Standard features
Comfortable and adjustable seat	Standard features
Easy to read instrument panel	Standard features
Entry grab bar	Standard features
Large cup holder, usb port & 12v electric jack, clip board	Standard features
Premium seats : Grammer seat	Optional extras
Panoramic mirror	Optional extras

PRODUCTIVITY

Excellent visibility through mast	Standard features
Hydraulic cushioned valve in secondary cylinder (FFL & FFT)	Standard features
Smooth and responsive acceleration and plugging	Standard features
Auto tilt leveling	Optional extras
Battery changing system (SRIO)	Optional extras
Direction switch on hydraulic control valve	Optional extras
Mono-pedal	Optional extras

RELIABILITY

Full AC system chassis	Standard features
IP65 Rated Curtis controller	Standard features
Oil-cooled disc brakes (ODB)	Standard features
Robust frame structure and strong structure overhead guard	Standard features
Rugged, durable and maintenance free rear drive axle	Standard features




SERVICEABILITY

Tool-less side cover	Optional extras
Wide open battery hood cover	Optional extras

- Standard features
- Optional extras

* Remark : This list is based on factory data. Standard or optional can vary for specific countries.



-  Production Subsidiary
-  Sales Subsidiary
-  Parts Depot Center

B16R-7-190110v1EN (January 2019)



Doosan Industrial Vehicle Europe nv

Europark-Noord 36A
9100 Sint-Niklaas
Belgium

Tel.: +32 3 760 09 87
Fax: +32 3 760 09 89
Website: www.doosan-iv.eu

Authorized Dealer

--